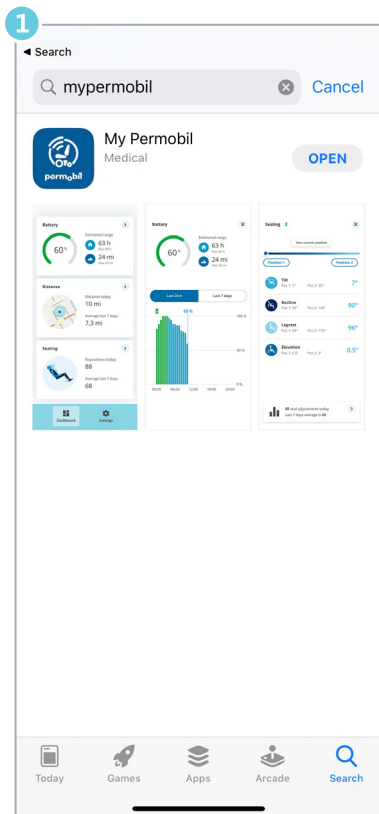


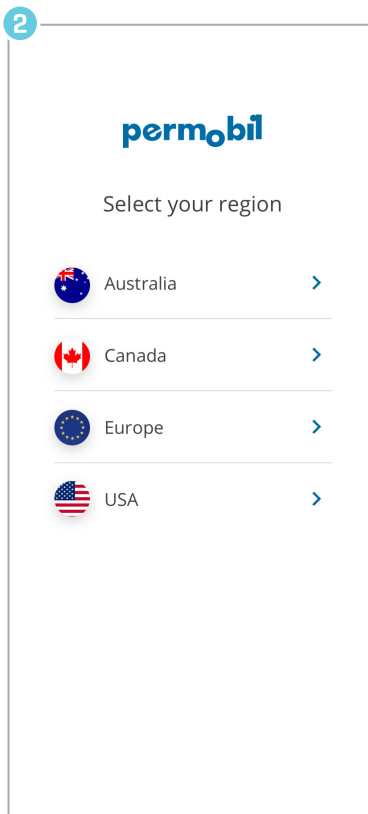
MyPermobil—Activation Process

NOTE: WiFi and email access is required for set-up

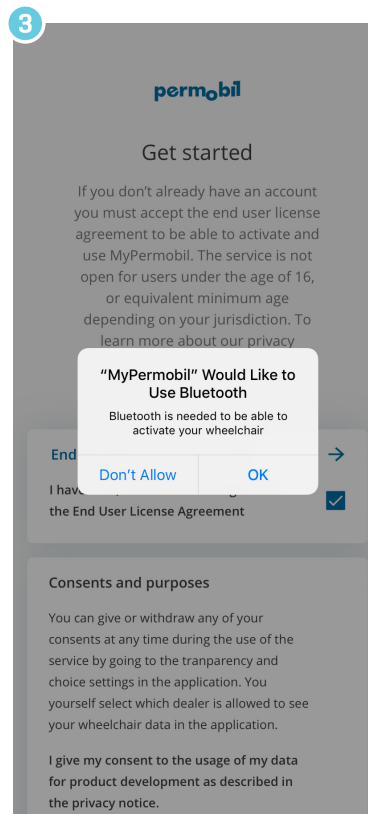
Getting started



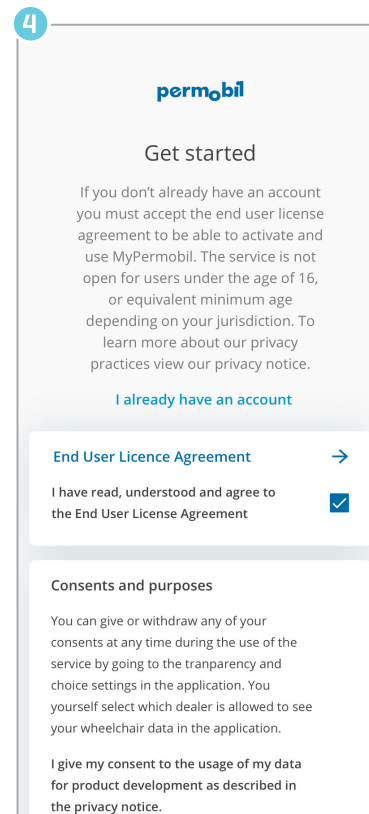
Download *MyPermobil* on your Android or Apple phone



Choose your region



Accept to allow Bluetooth™



Read/accept MyPermobil policy



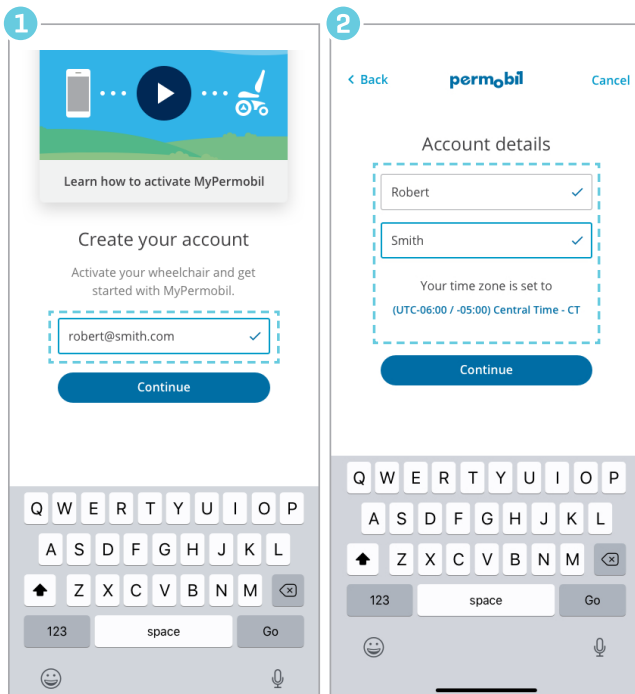
MyPermobil



MyPermobil—Activation Process

NOTE: WiFi and email access is required for set-up

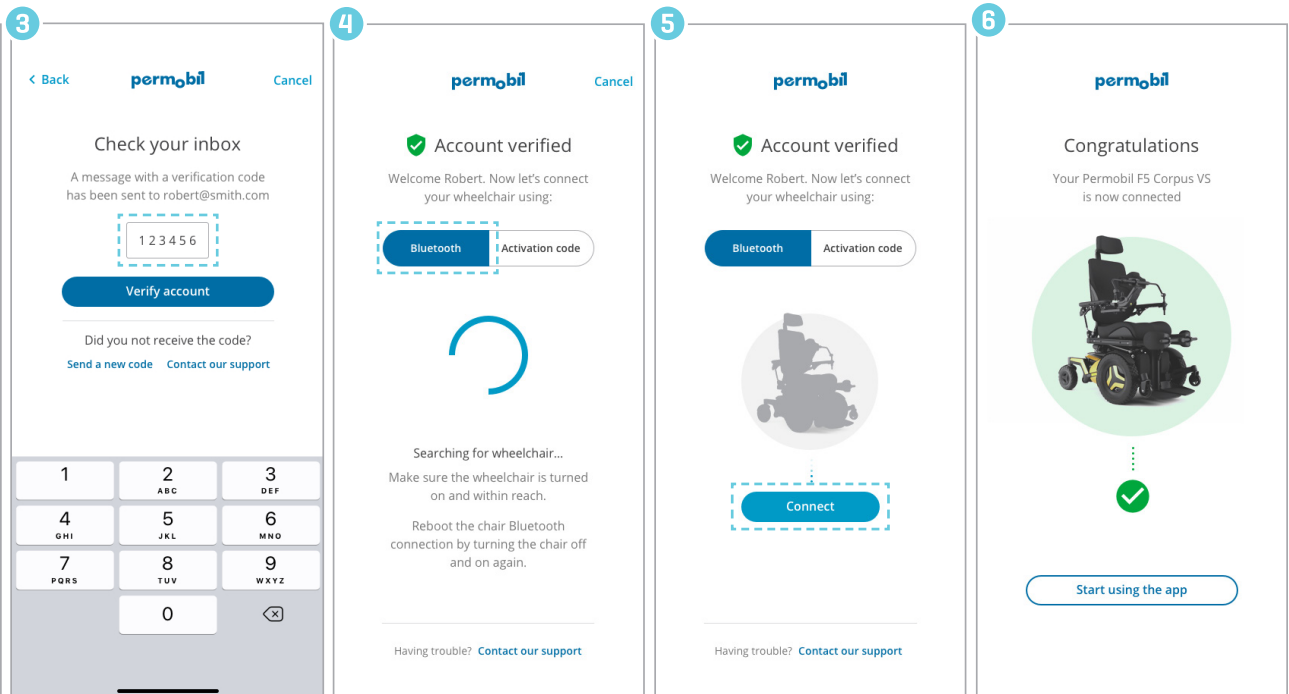
Create account



Enter email address

Enter your name and set time zone

Activate



Find code in email, enter it and hit "Verify account"

Select Bluetooth and turn on your wheelchair

Click on the Connect button

You are connected!

If your wheelchair is already on, turn it off and on again in order to reboot Bluetooth connection